

# MONTHLY MEMBERSHIP PROGRESS REPORT

LOCATION MARYLAND

District 22 B

Results as of: 1/31/2023

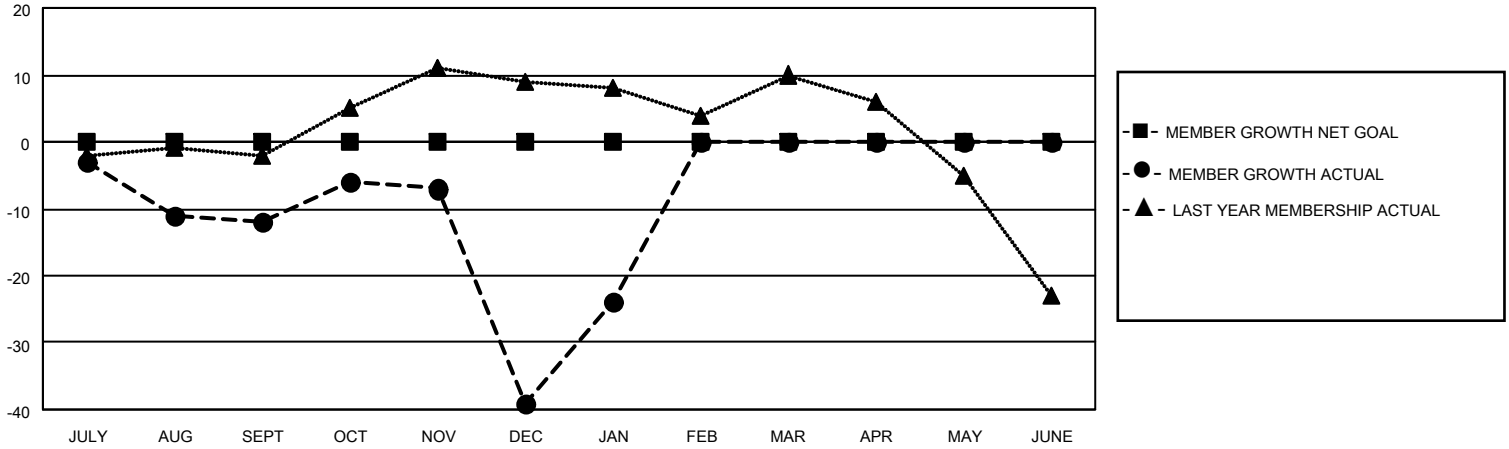
Clubs			
RESULTS FOR 2022-2023			
QUARTER	NEW CLUB GOAL	NEW CLUBS	DROPPED CLUBS
JULY/AUG/SEPT	0	0	0
OCT/NOV/DEC	0	0	2
JAN/FEB/MAR	0	0	0
APR/MAY/JUNE	0	0	0

Members			
RESULTS FOR 2022-2023			
QUARTER	MEMBER GROWTH NET GOAL	MEMBER GROWTH ACTUAL	DROPPED MEMBERS ACTUAL (including transfers)
JULY/AUG/SEPT	0	35	40
OCT/NOV/DEC	0	19	45
JAN/FEB/MAR	0	28	12
APR/MAY/JUNE	0	0	0

**GOALS AND ACTUAL NEW CLUBS CUMULATIVE**



**GOALS AND ACTUAL MEMBERS CUMULATIVE**



**DROPPED CLUBS: 2**

**22 CLUBS OF 47 ADDED 1 OR MORE NEW MEMBERS**

**GENDER DISTRIBUTION**

MALE	827 (65.12%)
FEMALE	443 (34.88%)
NON BINARY	0 (0.00%)
PREFER NOT TO ANSWER	0 (0.00%)

**DROPPED MEMBERS**

[CLICK HERE FOR CUMULATIVE MEMBERSHIP DATA](#)

DECEASED	18
CLUB CANCELLED	28
OTHER	51
<b>TOTAL</b>	<b>97</b>

TOTAL FAMILY UNIT MEMBERS	148
FAMILY MEMBERS PAYING HALF DUES	75